

PHILIPS

| | |
|--------|--------------|
| CI/SfB | (63.9) |
| UDC | 696.6:628.94 |

FLOODLIGHTING LAMPS

Tungsten halogen

A range of lamps for horizontal burning ($\pm 4^\circ$), suitable for use in small, lightweight luminaires for a wide variety of floodlighting applications.

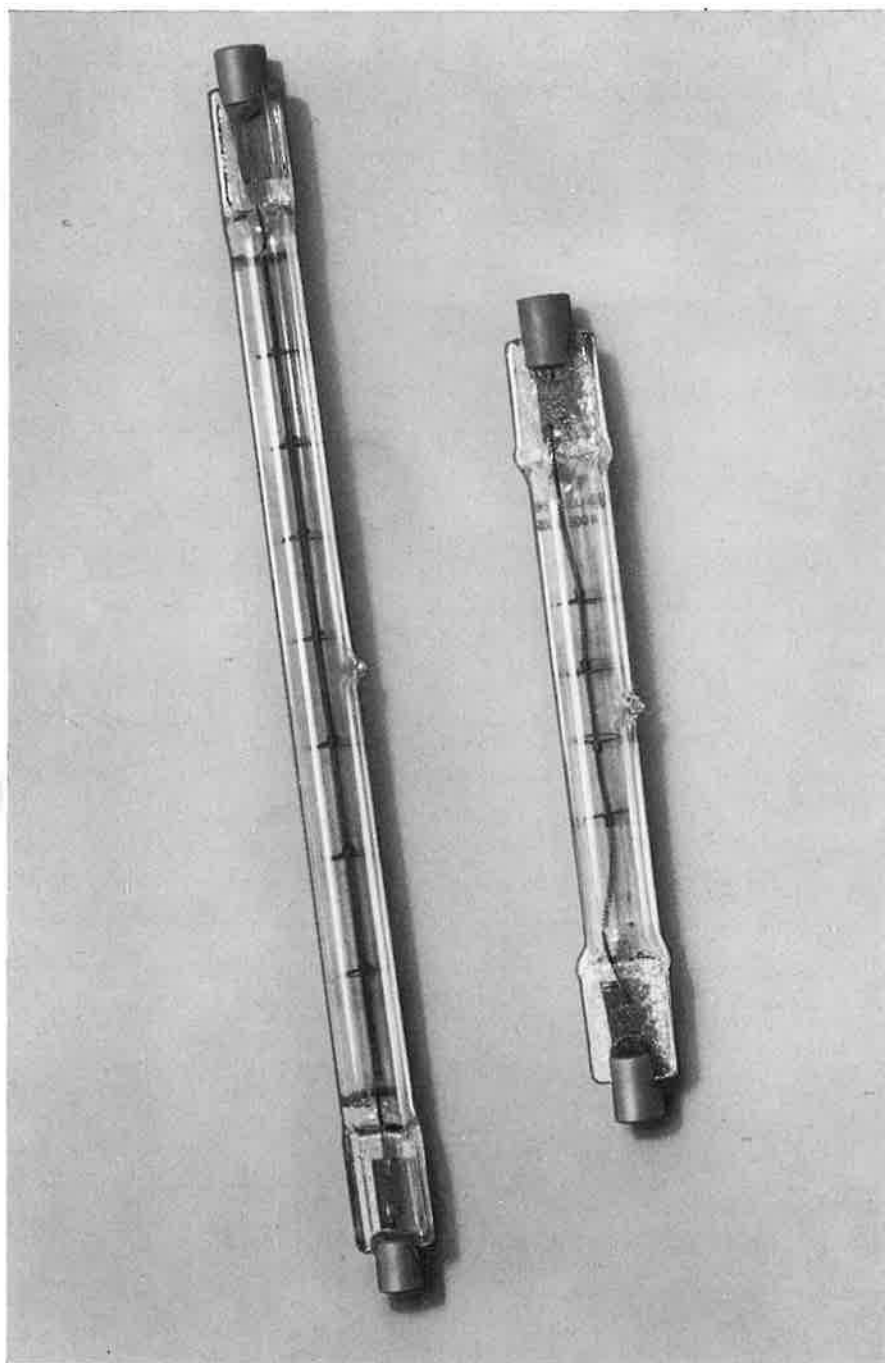
APPLICATIONS

Outdoor applications

- Building sites
- Sports grounds
- Parks
- Large gardens
- Fountains
- Car parks
- Airport aprons

Indoor applications

- Shops
- Halls
- Factories



| | |
|----------------------------------|--------------|
| Handbook Ref. | 3.3.7 |
| To reorder this data sheet quote | 9.77 PL 1770 |
| Replaces | NEW |

FILAMENT LAMPS

FEATURES

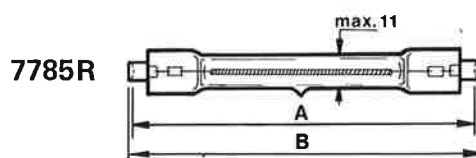
- Excellent colour rendering of tungsten halogen lamps preserves the natural colours of the environment in which the lamps are used.
- Luminous flux output is maintained throughout the life of the lamps due to the halogen regenerative cycle.
- Up to 20% more efficient than a GLS lamp of corresponding rating.
- Compact, easily controllable light source, suitable for use in small, lightweight luminaires.
- Easy to install and maintain.
- Instantaneous light after switch on.

Made in Holland

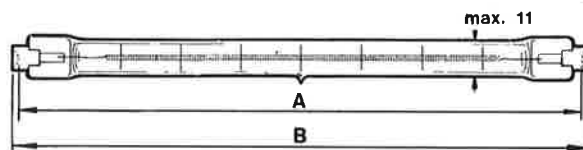
BURNING POSITION



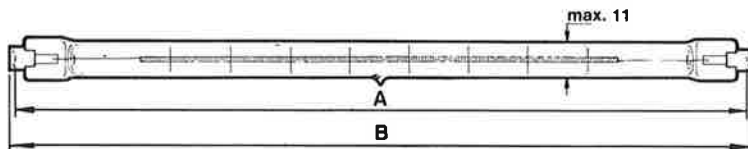
Horizontal $\pm 4^\circ$



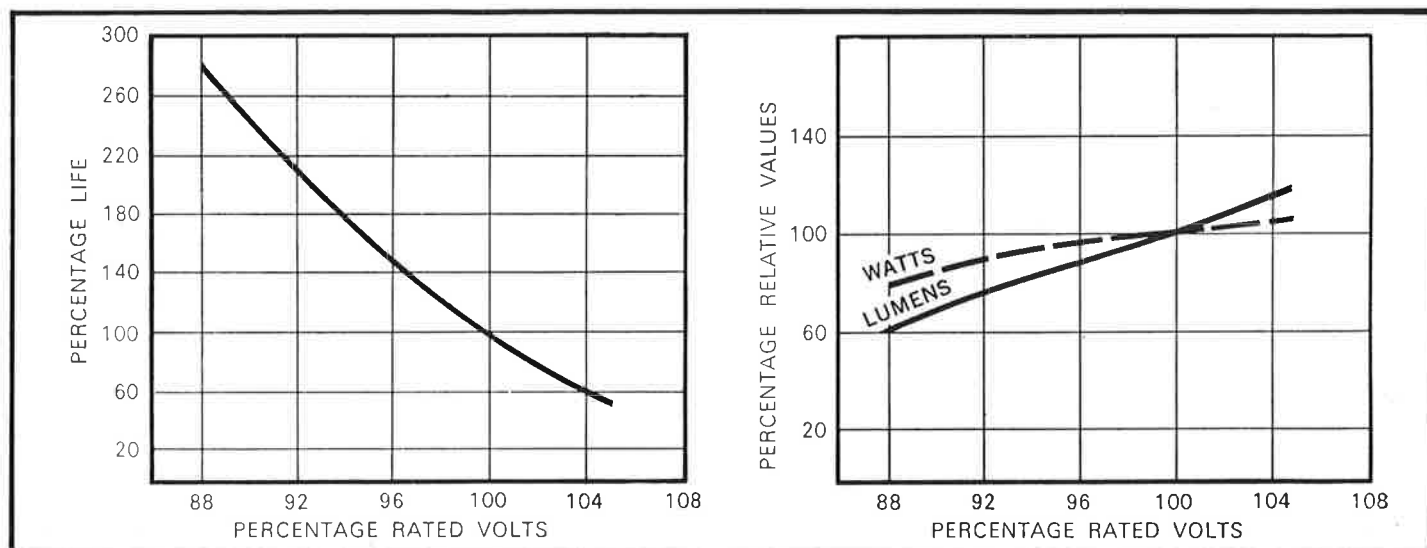
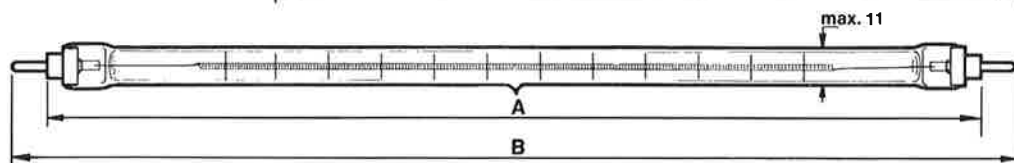
12013R



12110R



13021R



DIMENSIONS & ELECTRICAL DATA

| Type | Catalogue Number | Lamp Watts W | Lamp Voltage V | Cap | Nominal Luminous Flux | Dimensions (mm) Width (max.) | A | B max. | Packing quantity |
|------|------------------|--------------|----------------|--------|-----------------------|------------------------------|-----------------|--------|------------------|
| K9 | 12113R | 300 | 240/250 | R7s-15 | 5,100 | 11 | 114.2 \pm 1.6 | 117.6 | 12 + 72 |
| K1 | 7785R | 500 | 120 | R7s-15 | 10,000 | 11 | 114.2 \pm 1.6 | 117.6 | 12 + 72 |
| K1 | 7785R | 500 | 240/250 | R7s-15 | 8,500 | 11 | 114.2 \pm 1.6 | 117.6 | 12 + 72 |
| K4 | 12013R | 1000 | 120 | R7s-15 | 22,000 | 11 | 185.7 \pm 1.6 | 189.1 | 12 + 72 |
| K4 | 12013R | 1000 | 240/250 | R7s-15 | 22,000 | 11 | 185.7 \pm 1.6 | 189.1 | 12 + 72 |
| K5 | 13021R | 1500 | 240/250 | R7s-15 | 33,000 | 11 | 250.7 \pm 1.6 | 254.1 | 12 + 72 |
| K6 | 12110R | 2000 | 240/250 | Fa4 | 44,000 | 11 | 322.0 \pm 2.1 | 334.4 | 12 + 72 |

Note: Please order lamps by catalogue number, in multiples of the packing quantity, and specifying lamp voltage.

Dimension A (above) relates to electrical contact centres; Dimension B relates to overall length.

Products offered for sale may differ from those described or illustrated in this leaflet due to later production changes in specifications, components or place of manufacture. The contents of this leaflet are therefore not to be treated as representations as to the current availability of products as described, or as to products actually offered for sale.

**PHILIPS
ELECTRICAL LIMITED**

Lighting Division P.O. 298 City House
London Road Croydon CR9 3QR